

DC-A11 Quick Start Guide

⚠ Important

- * Please activate your warranty at www.MyLumens.com/reg
- * To download the latest version of Quick Start Guide, multilingual user manual, software, or driver, etc., please visit Lumens™ www.MyLumens.com/goto.htm
- * To ensure successful installation, please be sure to follow each of the following steps.

1. Software Installation Guide

1.1 System requirements

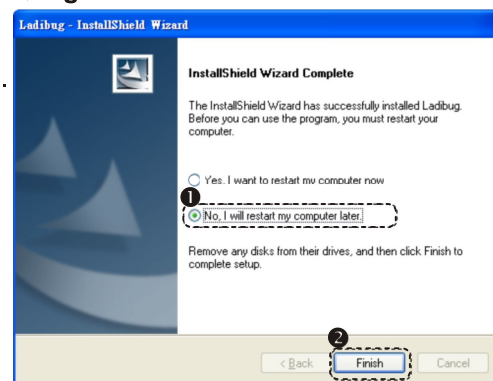
Windows XP	Windows Vista / Windows 7 / 8	MAC OS X 10.4 / 10.5 / 10.6 / 10.7 / 10.8
<ul style="list-style-type: none"> • Min CPU: P4 2.8 GHz • Min Memory: 512MB • Direct X 9 Compatible • Min Resolution: 1024x768 • 100MB Min Disc Space • Windows XP SP2 and above 	<ul style="list-style-type: none"> • Min CPU: P4 2.8 GHz • Min Memory: 1GB (32-bits) /2GB(64-bits) • Direct X 9 Compatible • Min Resolution: 1024x768 • 100MB Min Disc Space 	<ul style="list-style-type: none"> • Min CPU: PowerPC G4 866MHz or Intel Pentium®1.83GHz Intel Core 2 Duo • Min Memory: 512MB • Min resolution 1024x768 • 24-bit color display monitor • 1GB Min Disc Space • Min QuickTime 7.4.5

→ Windows XP / Vista / 7

1.2 Installing Ladibug™ / Podium View™

1. Download the **Ladibug™ / Podium View™** from Lumens™ web site.
 2. Click the **EXE** file after decompressing the downloaded file.
 3. Please follow the instructions, then press **[Next]**.
 4. Press **[Yes]** to create a shortcut on your desktop.
 5. Click **[NO]**, then press **[Finish]** to cancel the restart. (Refer to Fig. 1)
- [NOTE:** Please restart the computer only when the installation of Wireless LAN Utility is completed.]

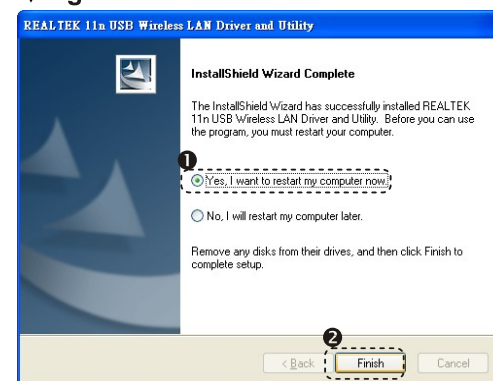
▼Fig. 1



1.3 Installing Wireless LAN Utility

1. Download the **Wireless LAN Utility** from Lumens™ web site.
2. Click the **EXE** file after decompressing the downloaded file.
3. Select Language.
4. Please follow the instructions, then press **[Next]**.
5. Click the **[Finish]** button to restart your computer. (Refer to Fig. 2)

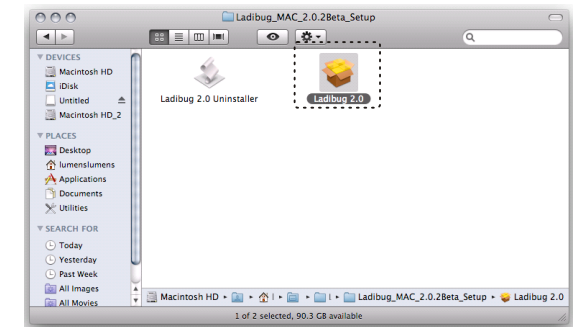
▼Fig. 2



→ MAC

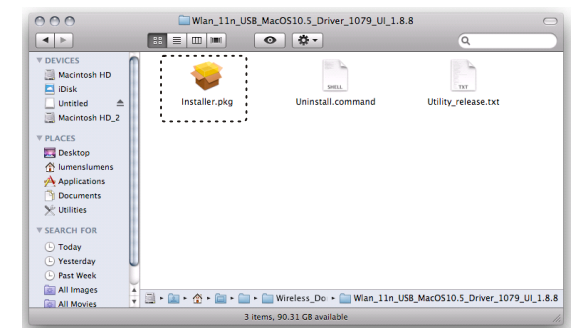
1.4 Installing Ladibug™ / Podium View™

1. Download the **Ladibug™ / Podium View™** from Lumens™ web site.
2. Click the **Ladibug™ / Podium View™** icons for installation after decompressing the downloaded file.
3. Please follow the instructions, then press **[Next]**.
4. Enter your ID and password then press the **[OK]**.
5. Press the **[Restart]** icon to complete the installation.

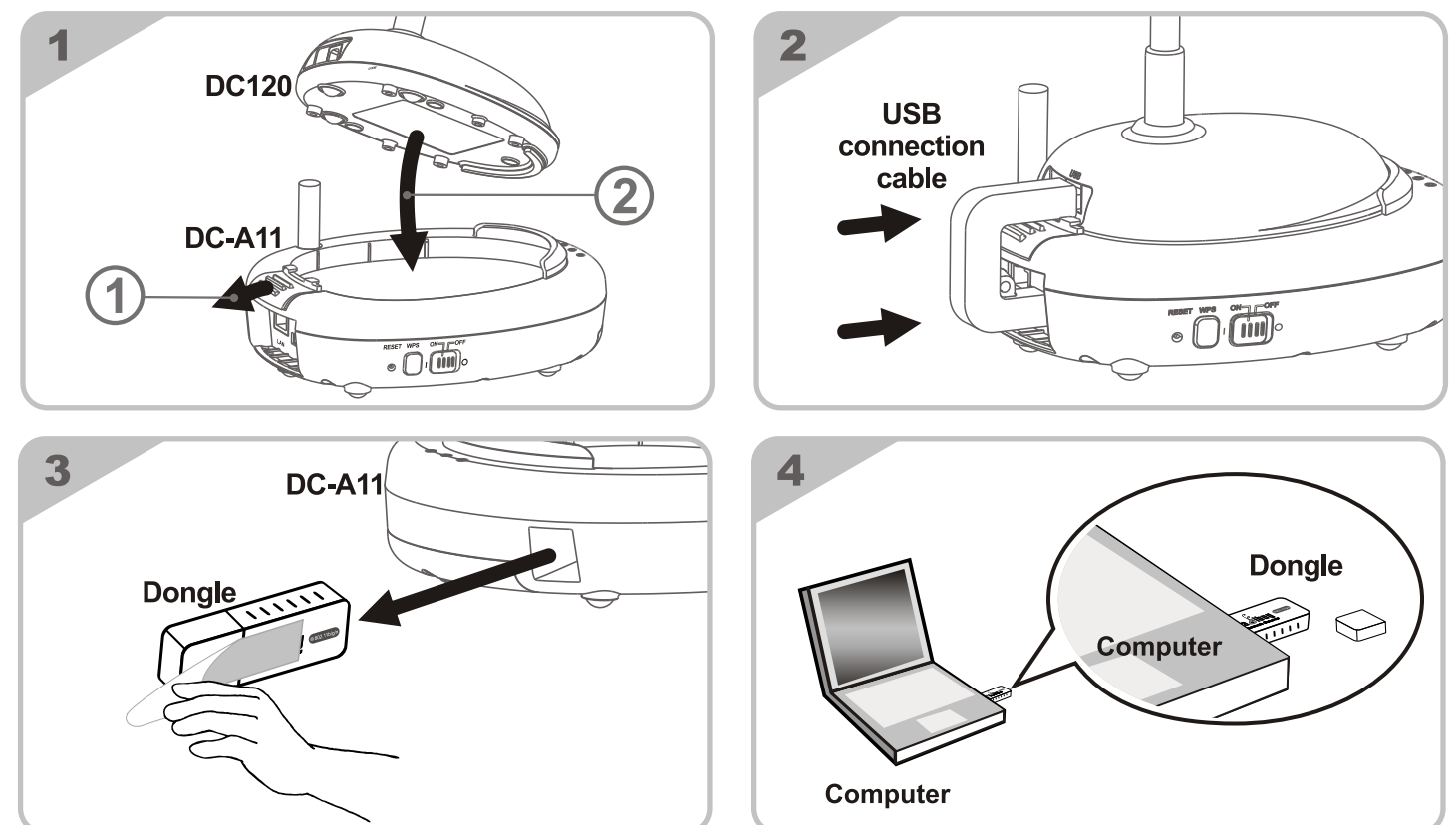


1.5 Installing Wireless LAN Utility

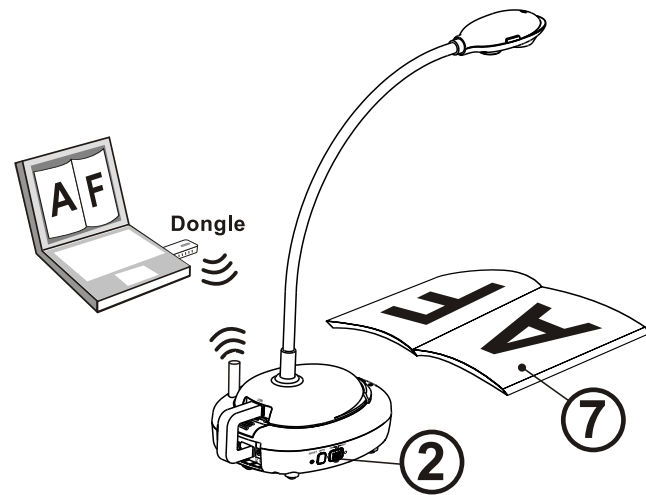
1. Download the **Wireless LAN Utility** from Lumens™ web site.
2. Click the **Wireless LAN Utility** icons for installation after decompressing the downloaded file.
3. Press the **Installer** icon, open the installation wizard, and run the installation process by following the onscreen instructions.
4. Select the language then press **[Continue]**.
5. Accept the software license agreement by pressing **[I Agree]**
6. Enter your ID and password then press **[OK]**.
7. Press the **[Restart]** to complete the installation.



2. Installation



3. Start Using



- ① Charge the unit for 3 hours before the first use.
- ② Switch power to [ON]. (Note: When the unit is fully charged, indicator lights blue.)
- ③ To start connection, please refer to [Section 4.1 Auto connection](#).
- ④ Modify SSID before the first use. Please refer to [4.2 Change the SSID](#).
- ⑤ Double click [Ladibug] or [Podium View] to active software.
- ⑥ Point the cursor to the [Ladibug] or [Podium View] and the function menu pops up.
- ⑦ Place an object to be displayed under the camera.
- ⑧ Press [Preview] to display a live image. Please make the following settings before the first use.
 - a. Windows security alert : Please press [Unblock].
 - b. Set the POWER Frequency according to the on-screen instructions. A live image is displayed when the setting is finished.
- ⑨ Press [AUTO TUNE] to optimize the image.

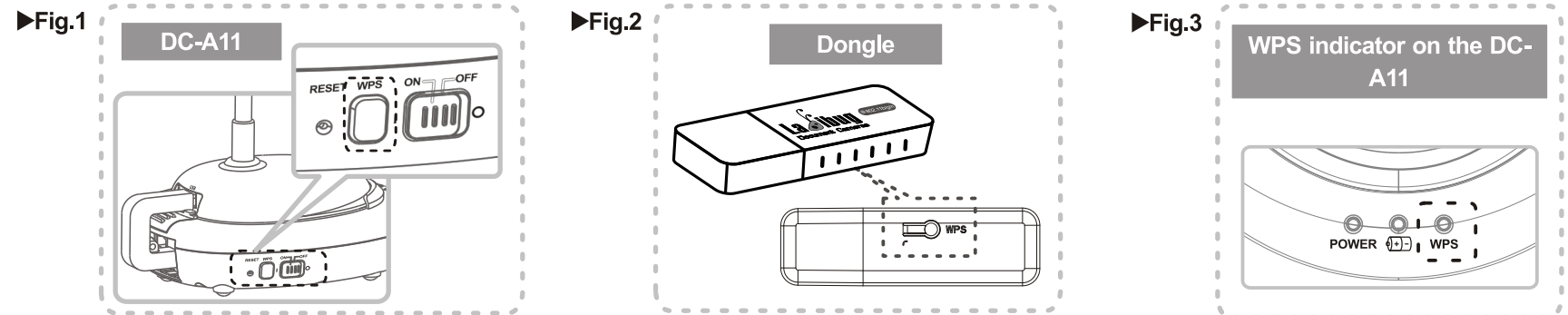
* The black screen may occurs when you execute [Preview] of Ladibug or Podium because of the firewall. Please check the firewall setting and refer to [DC-A11 user manual 6.2 Change the setting of firewall](#).

* For more information on the operation of DC-A11 / DC120 / PC120, please refer to [DC-A11 User Manual](#) / [DC120 User Manual](#) / [PC120 User Manual](#).

4. Start Wireless Network Connection

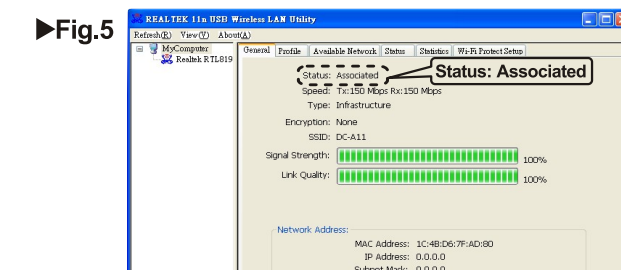
4.1 Auto connection

1. Press the **WPS** button on your **DC-A11**. (Refer to **Fig. 1**)
 2. Press and hold the **WPS** button on your dongle in 30 seconds. (Refer to **Fig. 2**)
- Note: The **WPS** indicator on your **DC-A11** flashes red first and turns to blue after being connected. ((Refer to **Fig. 3**))



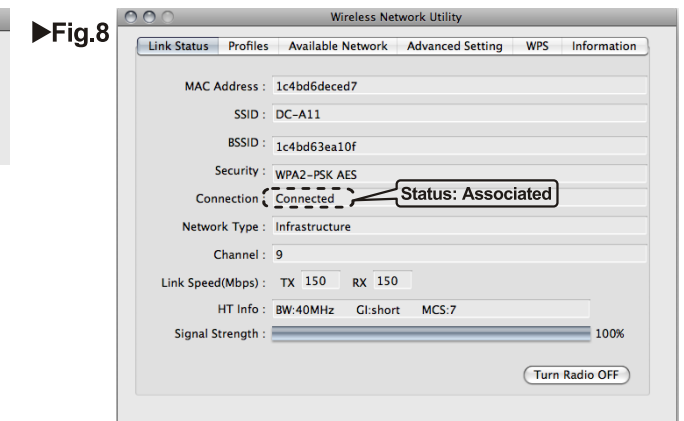
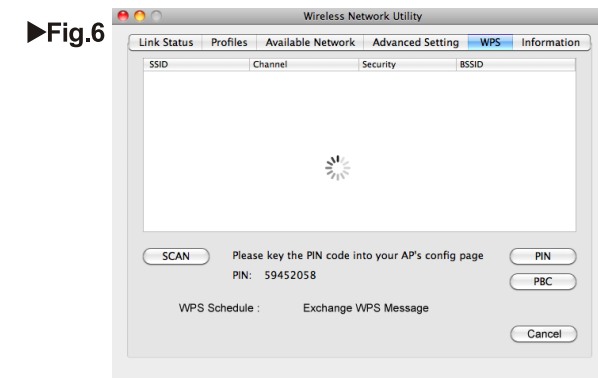
►For PC users:

3. The connection is started when the screen like **Fig. 4** displays. The connection will complete when the window closes.
4. Double click the icon of Wireless LAN Utility. (A screen indicating successful connection is as shown in **Fig. 5**)



►For MAC users

3. Connection starts once **Fig.6** displays. Press the [OK] in **Fig.7** to complete the connection.
4. See **Fig.8** for successful connection indicator.



4.2 Change the SSID

1. Open the Internet Explorer browser, and enter [192.168.2.1] (default) in the address bar.
2. Enter the Login Name [Admin] and enter the default password [Admin] and click [Login].
3. Enter the [Basic] page and enter new [SSID] (Refer to **Fig.9**).
4. Click [Apply] to apply the changes then make a connection again according to the steps of [4.1 Auto connection](#).

